

DIA-AGRI

# Goodly Calcium

Fertilizer Registration Certificate  
No:Fer-Mfg (Micro) No. 0799003



- Rice is about to be harvested, but lodging occurs!
- How can crops endure scorching sun, freezing winter if the root system is not strong enough?

With nano-grade Si as the main component, complemented with a variety of trace elements, Goodly Calcium can be applied by either root drench or foliar spray. Crops can effectively absorb and accumulate the nutrients at the epidermal tissue, enhance physical toughness to protect itself from external attacks by insects, fungi, etc.

If rice is silicon deficient, symptoms are growth declination, leaves fade, appearance of yellowish streaks among venation starting from the leaf apex, followed by browning and leaves curling spirally. This results in delayed heading with whiteheads, grain deformation, disordered seed setting, weak stems, making the crop liable to lodging, and suffering from rice blast.

## Contents

|  |                |
|--|----------------|
| Calcium oxide<br>(water-soluble calcium oxide)     | 6.4%<br>(2%)   |
| Silicon dioxide<br>(water-soluble silicon dioxide) | 6.0%<br>(1.5%) |
| Water-soluble magnesium oxide                      | 1%             |
| Water-soluble boron                                | 0.5%           |
| Zinc   | 0.4%           |



DIAMOND NANO-BIOCHEM.CO.,LTD.  
Website: <http://diacal.com.tw>  
E-mail: [service@diacal.com.tw](mailto:service@diacal.com.tw)

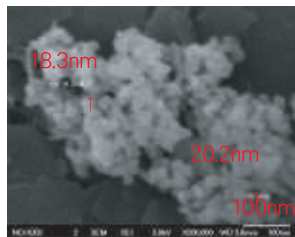


Address: No.1, Wangfu St., Dadu Dist., Taichung  
City 432, Taiwan (R.O.C)  
Tel: +886-4-26932811  
Fax: +886-4-26930811

# Goodly Calcium

## Product Features

1. Main component is "Si", together with calcium, magnesium, and boron, thoroughly supplementing essential nutrients which are usually deficient in base fertilizers.
2. It is a non-silicate slag fertilizer, heavy metal doubt-free, safe material developed with proprietary nanotechnology.
3. Low usage with high-performance efficiency, utilizing calcium carriers in crops, which can optimize nutrient absorption holistically.



Nano particles with an average size about 20 nm, promotes grain production and increase yield.

## Recommended application timing and method

| Gramineous crop                        | Application timing                    | Application method | Dilution        | Application frequency  |
|--|---------------------------------------|--------------------|-----------------|--|
| Rice<br>Wheat<br>Barley<br>Grain crops | Tillering period                      | Spray              | 500 – 800 times | Total apply three times during each season, apply once for each period.<br><br>Apply more than once during rainy season. |
|  | Young panicle formation               |                    |                 |  |
|  | Head sprouting to milk ripening stage |                    |                 |  |
| Corn, sugar cane, bamboo shoots, turf  | After planting and pruning            | Spray / Drench     |                 | Every 10 to 14 days apply once, more than once during rainy days.  |

## Usage example at 500 times dilution rate:

One hectare of land uses 1 ton of water, use 2 L Goodly calcium for each application, which means the volume used in 1,000 m<sup>2</sup> of land (1 hectare=10,000 m<sup>2</sup>) is 200 mL. Apply Goodly calcium during each ideal stage, minimum usage quantity is able to provide the best results.



## Cautions

1. No blending agent is added, precipitation is a natural phenomenon, please stir/shake well before use.
2. It is recommended to use solely. If mixed with other pesticides and fertilizers, please dilute before mixing. Do not mix with copper-containing pesticides and fertilizers.
3. If it has not been used up, please keep a little water on the liquid surface to avoid hardening. Store in a cool place, avoid high temperature and sunshine.